

Fabric Envelope Pattern

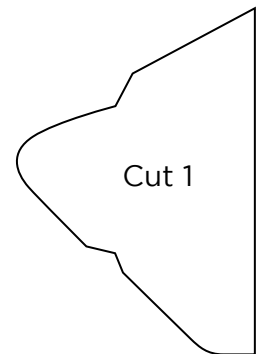
Supplies:

- 1 exterior fabric, 14" x 10½"
- 1 interior fabric, 14" x 10½"
- Fusible interfacing, 13½" x 10"
- Scissors
- Iron
- Piecing thread
- Optional: decorative thread
- Fabric glue or hot glue gun
- Optional: button and ribbon or velcro for closure



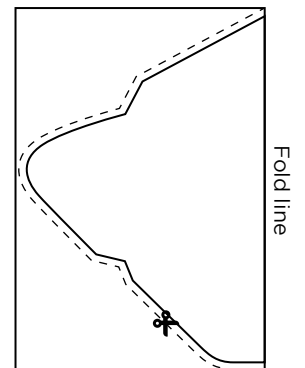
Instructions:

Print the fabric envelope pattern on page 4 on US Letter (8½" x 11") paper at 100% scale. Use scissors to cut out on the solid line.



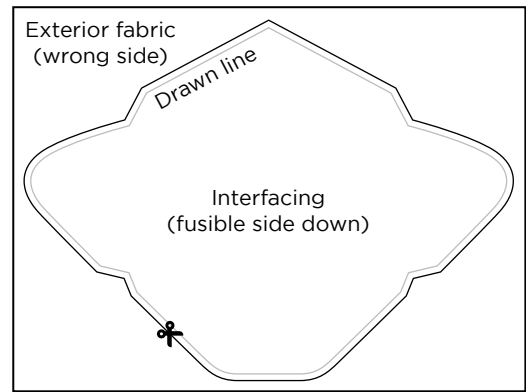
Fold the piece of interfacing in half on the long end and position the template fold line along the folded edge. Trace the envelope pattern on the piece of interfacing.

Cut ¼" outside the traced line on the interfacing.



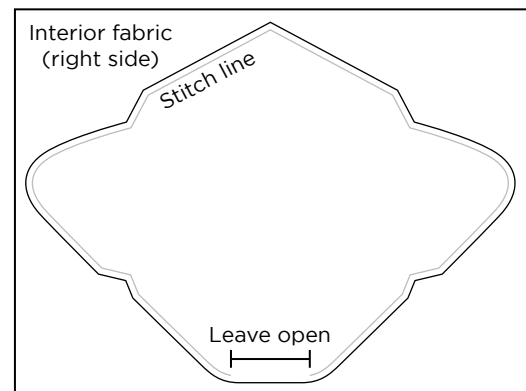
With fusible side toward fabric, center the cut interfacing piece on your exterior fabric to the wrong side of the fabric, and iron in place.

Cut the exterior fabric $\frac{1}{4}$ " outside the traced line on the interfacing.

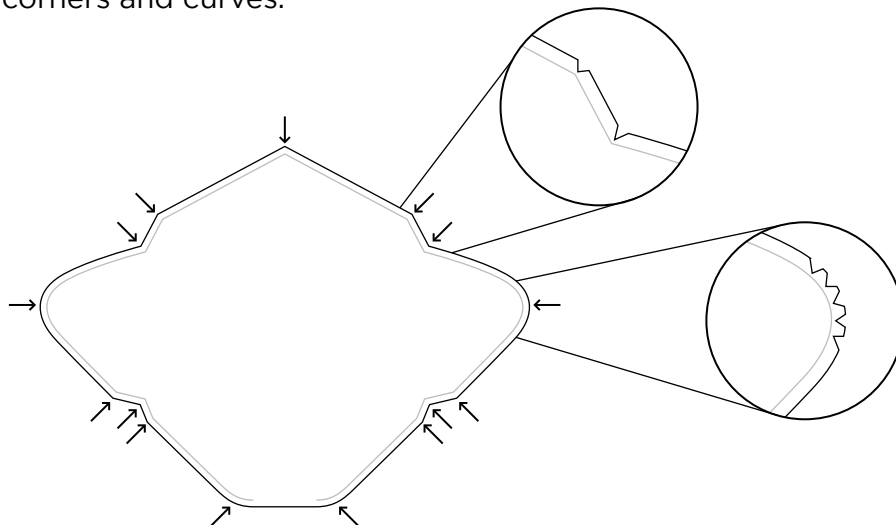


Place your interior fabric right side up on a flat surface. Place your exterior fabric wrong side up centered on top of it so the interfacing side is on top. Pin in place.

Sew through all layers along the drawn line on the interfacing, leaving a 2" gap open along the bottom edge. Backstitch when starting and stopping.



Cut out the interior fabric along the edge of the other layers. Cut a few small notches along tight corners and curves.

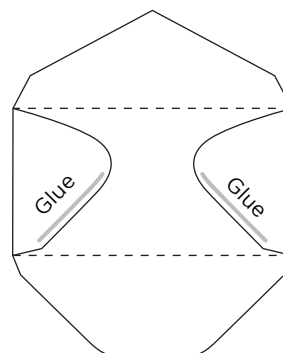
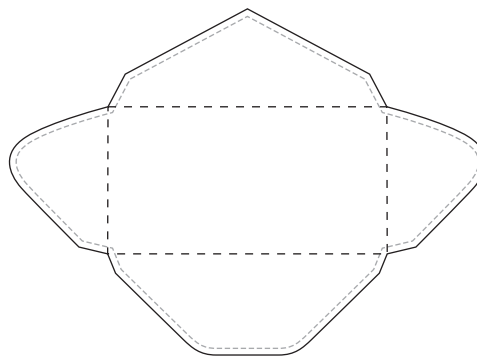


Carefully turn the envelope right side out through the opening at the bottom. Make sure that the corners and curves are pushed all the way out and the fabric edges at the bottom are tucked in, then iron flat.

Stitch around the envelope shape $\frac{1}{8}$ " from the edge.

Starting with the side flaps, fold and press the flaps of the envelope to the center of the envelope.

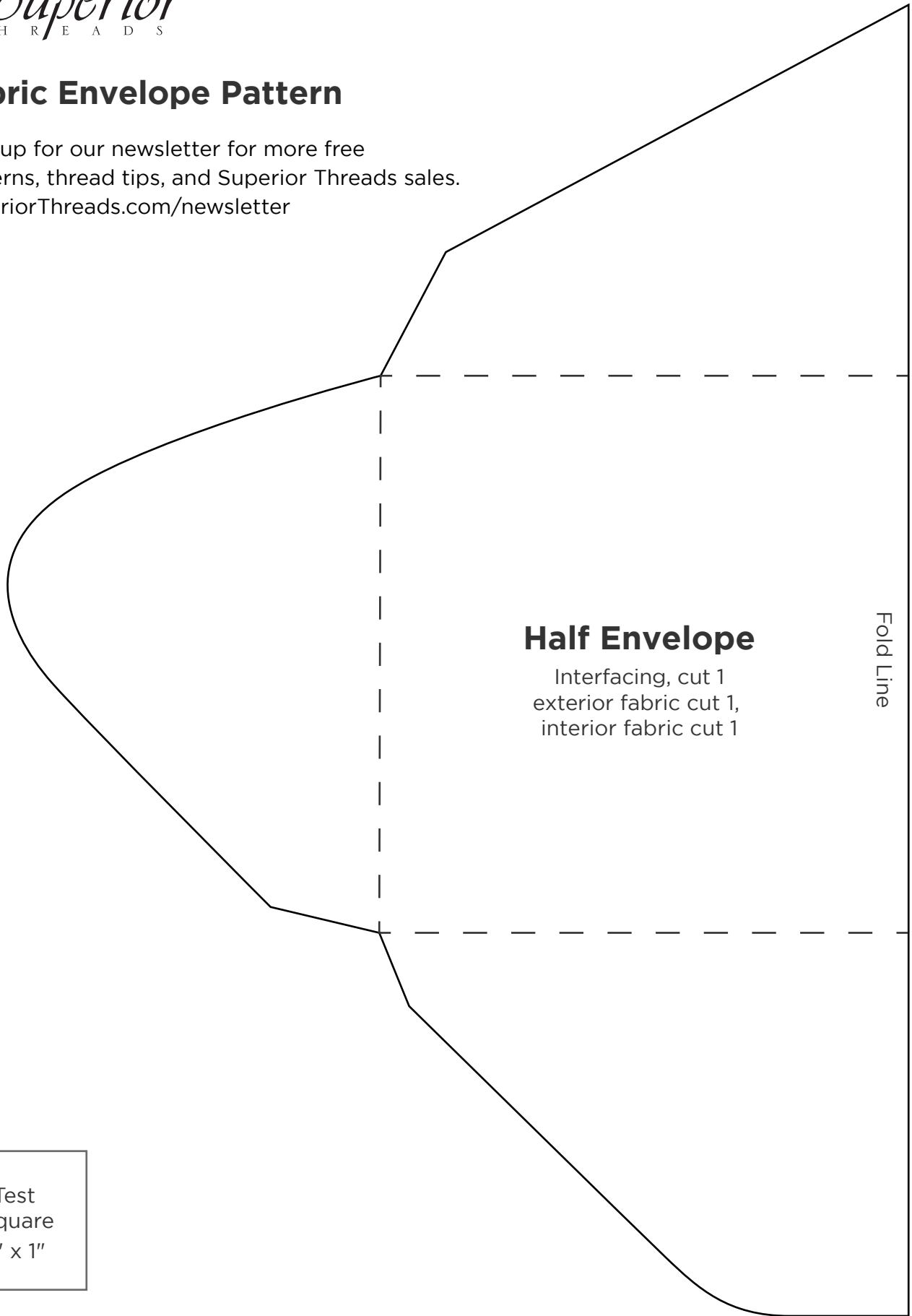
Add a small amount of fabric glue or hot glue to the edges of the side flaps and fold the bottom flap up to attach. If using fabric glue, press under something large and flat, like a book, until it is dry.



Optional: glue or sew on velcro or ribbon and a button as a closure.

Fabric Envelope Pattern

Sign up for our newsletter for more free patterns, thread tips, and Superior Threads sales.
SuperiorThreads.com/newsletter



Test
Square
1" x 1"